

LOCATELLI

CRANE



ATC 20 >>



CAMION

SASIU

Cadru sudat, construit din material cu rezistenta superioara.

STABILIZATORI HIDRAULICI

Hidraulici independenti cu trasee si iesire orizontala si 4 cilindri verticali cu valve de blocare. 3 modalitati de pozitionare 0% 50% 100%

MOTOR

Turbo Diesel IVECO N67ENTX20, sase cilindri in linie , racire cu apa. Putere max 175 Kw cu 2.200 rotatii /min. Cuplu max 1020 Nm la 1.500 rotatii/min.

Filtru uscat de admisie a aerului cu cartus de siguranta si indicator de colmatare cu semnalare in cabina. Capacitate rezervor carburant 250 l.

TRANSMISIE

Hidrostatica cu 2 viteze. Control electronic al tractiunii cu modalitate automata de trecere de la vitezele reduse la cele rapide.

POMPE HIDRAULICE

Pompa cu cilindru variabila, cu comanda electrica proportionala pentru transmisie .
Pompa cu cilindru variabil load sensing pentru manevre brat si troliu .
Pompa cu viteze pentru Comenzi directive, stabilizatori, suspensii si rotatie.

AXE

Anterior si posterior : conducere/ ax directie cu diferential si reductii planetare fixate pe sasiu cu bare de reactive. Blocare diferentiala pe ambele axuri.

SUSPENSII

Hidropneumatice independente, blocabile cu comanda in cabina; nivelare automata pentru mers pe strada

DIRECTIE

Electrica pentru off road si mecanica servo-asistata pentru mers pe strada.
Patru posibilitati de directie: numai roti anterioare; roti posterioare;
coordonata; cu crab. Blocaj hydraulic al directiei posterioare pentru mers pe strada cu comanda in cabina.

FRANE

Cu dublu circuit independent cu comanda pneumatica cu system antiblocare ABS si frana de parcare. Frana motor cu comanda pe pedala in cabina.

PNEURI

365/85R20, montate individual, adaptate pentru lucrul pe strada si in afara.

INSTALATIE ELECTRICA

De pornire si iluminare la 24 Volți conform cu normativa CE.

TURELA

STRUCTURA TURELA

Construita cu placi si profile late din otel cu rezistenta superioara.

BRAT TELESCOPIC

Cu 6 sectiuni . Brat cu extindere integral hidraulica si sincronizat de la 5.6 m la 23.8 m cu control electronic. Inaltime maxima cap brat 26 m.

RIDICARE BRAT

Cilindru hidraulic cu efect individual. Ridicare de la -9.5° la 80°.

ROTATIE TURELA

Rotatie continua la 360°. Motor hidraulic cu reductor cu reductie dubla epicycloidală.
Frana de rotatie automata cu discuri multiple.
Sistem de rotatie libera. Roata/pinionzimitat extern.
Blocaj pneumatic rotatie cu comanda din cabina de pilotaj.

TROLIU

Pus direct pe brat. Motor hidraulic cu pistoane cuplat la reductor cu reductie dubla epicycloidală. Tambur canelat. Frana automata cu discuri multiple. Sistem de rotatie libera si valva de contrabalansare.

CABINA

Construita din otel si prevazuta cu clima, radio auto si faruri de lucru.
Vizibilitate panoramica completata de ferestre mari de siguranta.
Scaun operator culisant si reglabil in sus si jos.
Oglinzi retrovizoare externe cu incalzire si reglabile electric.

COMENZI MACARA

Senzori electrici proportionali montati pe bratele scaunului operator prin comanda independenta sau simultana cu miscarea macaralei.
Sistem integrat control Comenzi.
Limitatorul de sarcina si miscarile macaralei sunt controlate electronic (LOCATRONIC).

DISTRIBUTORI

Distribuitoii hidraulici proportionali load sensing care garanteaza combinarea simultana a miscarilor macaralei.

COMENZI MISCARI MACARA

Volan inclinabil pentru comanda directie roti anterioare.
Buton electric pentru directie independenta a rotilor posterioare.
Selector schimb de viteze , schimbare directie si frana de parcare.
Buton electric pentru redresare mers stradal/in afara. Instrumente diagnoza motor.

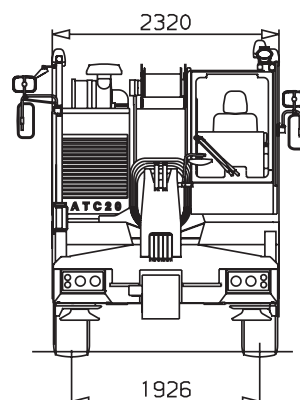
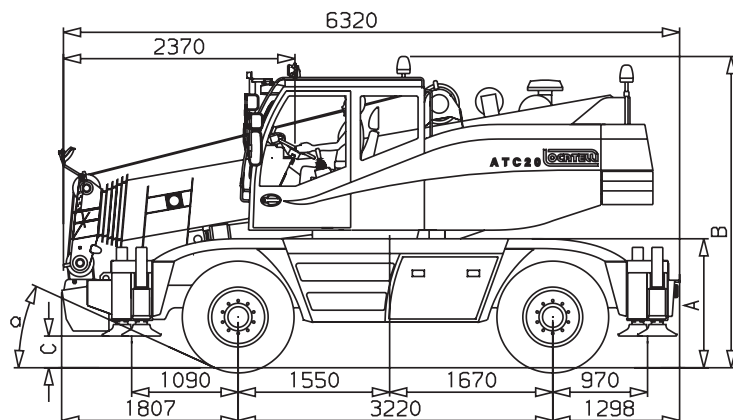
DISPOZITIE DE SIGURANTA

Limita urcare si coborare carlig. Valve de blocare pe toti cilindrii hidraulici.
Valve de presiune maxima pe totate circuitele hidraulice.

ACCESORII LA CERERE

- Brat telescopic de 8 m
- Catarg industrial de 1.15 m
- Carlig cu bila 3.000 kg
- Bloc cu 3 scripeti de 12500 kg
- Bloc cu ancora cu 5 scripeti de 20.000 kg
- Far de lucru (pe sectiunea baza a bratului)

- Incalzire independenta cabina
- Roata de rezerva 365/85 R20
- Radiocomanda
- Platform aeriana
- Sistem graseiere automata partea inferioara
- Personalizare publicitara pe cabina si brat



	A (mm)	B (mm)	C (mm)	α (mm)
max	1410	3270	410	28.5°
stradal	1330	3190	330	24.5°
min	1240	3100	240	19.5°

Dimensiuni (mm)

CHASSIS

CHASSIS

Heavy duty, all welded box type section frame.

OUTRIGGERS

Four independent hydraulically operated and automatically synchronized telescopic outrigger beams with vertical hydraulic jacks and lock valves. Extension lockable in 3 positions 0%, 50%, 100% .

ENGINE

Turbo Diesel IVECO N67ENTX20, six cylinders turbocharged intercooler diesel engine and water cooled. Max. power 175 kW at 2.200 rpm. Max. torque 1.020 Nm at 1.500 rpm. Dry type air cleaner with safety cartridge and service indicator. Fuel tank capacity 250 L.

TRANSMISSION

Hydrostatic with 2 speeds. Fully electronic drive control for fast and slow driving.

HYDRAULIC PUMPS

Variable flow piston pump for driving. Load sensing variable flow piston pump for derricking, hoisting and telescoping. Continuous flow pump for steering, outriggers, suspensions and slewing.

AXLES

Front and rear driving/steering axles with differential and planetary reduction constrained to the frame by reaction bars. Differential lock-out on both axles.

SUSPENSIONS

Adjustable, hydropneumatically operated independent suspensions; automatic levelling for road travel.

STEERING

Electrical steering for the off-road mode. Hydraulic servo steering and mechanical connection shaft for on road driving. Four steering modes: only front, only rear, coordinated and crab steering. Positive lock to held in center line rear wheels for road travel by control in the cab.

BRAKES

Air controlled, dual independent braking system, with ABS and parking brake. Engine retarder .

TYRES

365/85 R20 single mounted front and rear, suitable for on- and off-road operation.

ELECTRICAL EQUIPEMENT

24 volt starting and lighting equipment according to EC traffic regulations.

OPTIONAL EQUIPEMENT

- 8,0 m foldable fly jib
- 1,15 m runner
- Single hook 3.000 kg capacity
- Hookblock 12.500 Kg
- Anchor hookblock 20.000 Kg
- Work lights (on base boom)

R1:
4 roti directoare
4 wheels steered

SUPERSTRUCTURE

SUPERSTRUCTURE FRAME

Fabricated from high tensile steel plate.

BOOM

6 sections 5,6 to 23,8 m automatically synchronised fully powered telescoping boom. Electronically controlled synchronization of boom. Max. boom head height 26 m.

BOOM ELEVATION

Single hydraulic cylinder. Elevation from -9,5° to +80°.

SLEW

360° continuous rotation. Hydraulic motor driving slewing pinion through planetary double reduction unit. Spring applied, hydraulically released multidisc type slew brake. Free swing device. External gear teeth slew ring. Hand operated slewing lock, controlled from the operator's cab.

MAIN HOIST

Boom mounted. Twin piston type hydraulic motor, driving grooved hoist drum through double reduction gear unit. Spring applied, automatically released fail-safe hoist brake and counterbalance valve.

OPERATOR'S CAB

All steel construction , with air conditioner and auto radio. Safety glass and operator's seat on slides with height and rake adjustment. External heated rear-view mirrors and electrically adjustable.

CRANE CONTROLS

Armrest mounted joysticks for independent or simultaneous operation of crane motions. Integrated control system. Crane motions and the safe load indicator are electronically controlled by the LOCATRONIC system.

CONTROL VALVES

Load sensing proportional valve banks permitting simultaneous control of multiple crane functions.

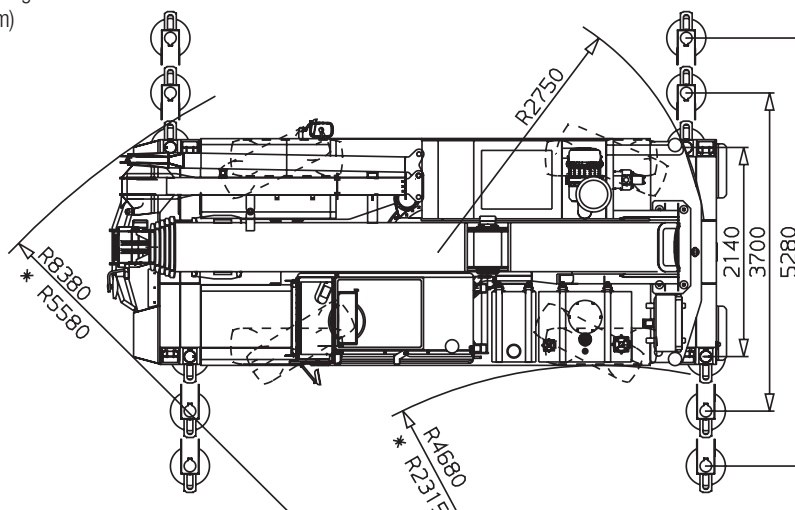
TRAVEL CONTROLS

Adjustable steering wheel for control of front steering axle. Electric switch for independent steering of rear axle. Transmission gear selection, forward-reverse shift and parking brake control. Control switch for on- and off-road drive. Master gauge for engine diagnostic.

SAFETY DEVICES

Overhoist and overlower limit switches; lock valves on all cylinders; hydraulic overload valves on all systems.

- Spare tyre 365/85 R20
- Remote control
- Aerial Platform
- Automatic centralized lubrication for carrier
- Company name on the cab and boom



Dimensiuni (mm)

CAPACITATE RIDICARE BRAT TELESCOPIC - LIFTING CAPACITIES TELESCOPIC BOOM



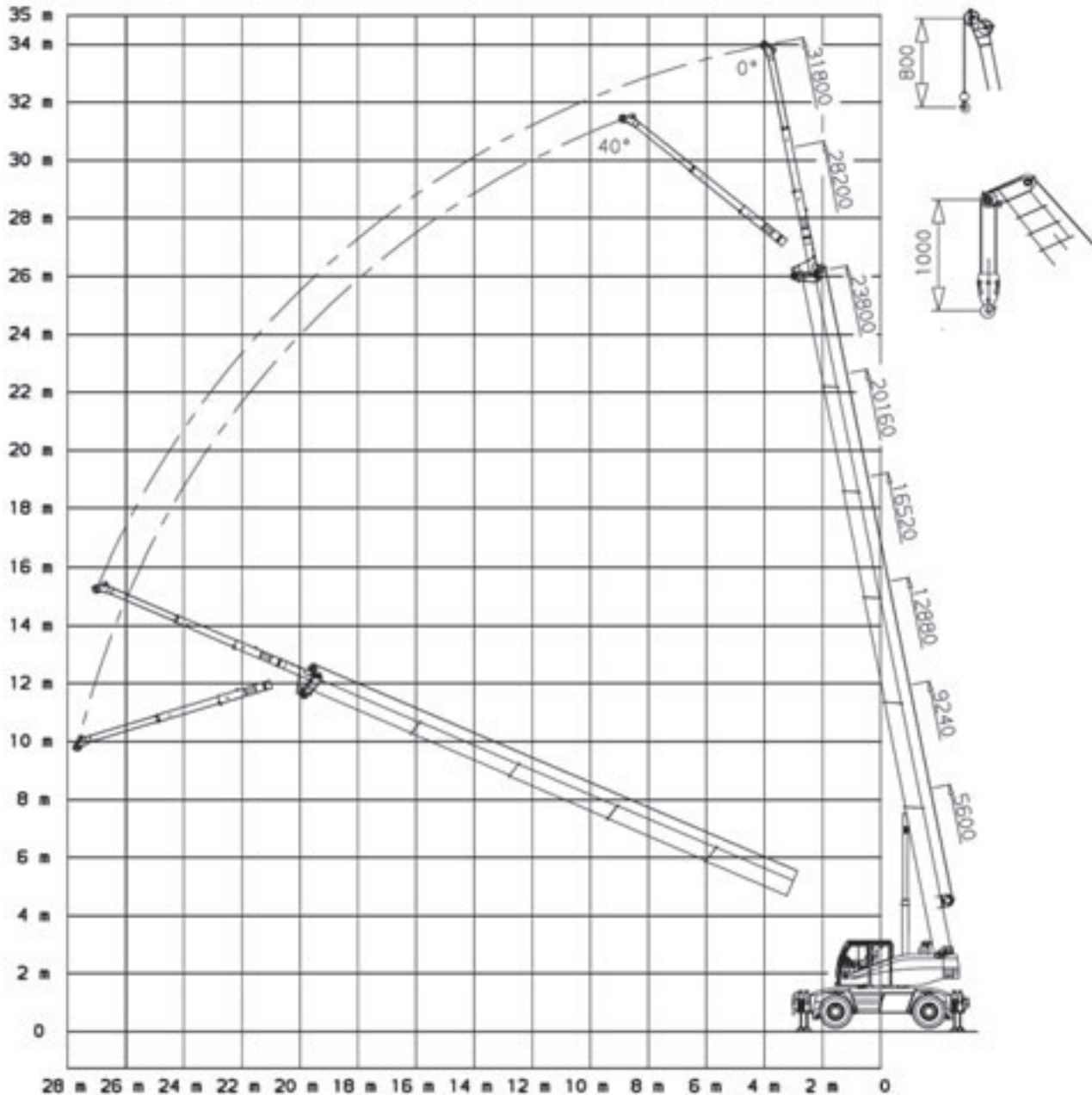
m	9,24 m	12,88 m	16,52 m	20,16 m	23,80 m	m
	TELE %	TELE %	TELE %	TELE %	TELE %	
	1-0-0-0-0	1-1-0-0-0	1-1-1-0-0	1-1-1-0.5-0.5	1-1-1-1-1	
2,0						2,0
2,5	20,0	14,5	11,2	9,5		2,5
3,0	18,5	14,5	11,2	9,5	6,5	3,0
3,5	16,5	13,6	11,0	9,0	6,5	3,5
4,0	14,0	12,7	10,3	8,6	6,5	4,0
4,5	12,2	11,6	9,7	8,2	6,2	4,5
5,0	10,6	10,6	9,1	7,7	6,0	5,0
6,0	8,4	8,3	8,0	6,9	5,6	6,0
7,0		6,8	7,0	6,2	5,2	7,0
8,0		5,6	5,8	5,6	4,7	8,0
9,0		4,4	4,7	5,0	4,4	9,0
10,0			3,8	4,2	4,0	10,0
11,0			3,1	3,5	3,7	11,0
12,0			2,6	2,9	3,2	12,0
13,0			2,1	2,5	2,7	13,0
14,0				2,1	2,3	14,0
15,0				1,8	2,0	15,0
16,0				1,5	1,7	16,0
17,0				1,3	1,5	17,0
18,0					1,3	18,0
19,0					1,1	19,0
20,0					1,0	20,0
21,0					0,8	21,0

Capacitate cu brat inchis (5,6 m) - Capacity with 5,6 m boom
 2 m (14,5 t) - 2,5 m (12,0 t) - 3 m (10,8 t)



m	0 km/h				3 km/h				m
	360°				0°				
	5,60 m	9,24 m	12,88 m	16,52 m	5,60 m	9,24 m	12,88 m	16,52 m	
	TELE %	TELE %	TELE %	TELE %	TELE %	TELE %	TELE %	TELE %	
	0-0-0-0-0	0-1-0-0-0	0-1-1-0-0	0-1-1-0.5-0.5	0-0-0-0-0	0-1-0-0-0	0-1-1-0-0	0-1-1-0.5-0.5	
2,0					9,1				2,0
2,5					7,7				2,5
3,0	4,5	4,3			6,7	6,2			3,0
3,5		3,6	3,7			5,4	5,4		3,5
4,0		3,0	3,2			4,7	4,7		4,0
4,5		2,6	2,7			4,1	4,2		4,5
5,0		2,2	2,4	2,6		3,7	3,7	3,9	5,0
6,0		1,5	1,8	2,0		3,0	3,0	3,2	6,0
7,0			1,3	1,5			2,5	2,7	7,0
8,0			0,9	1,1			1,9	2,1	8,0
9,0			0,6	0,9			1,5	1,7	9,0
10,0			0,5	0,6			1,2	1,4	10,0
11,0				0,5				1,2	11,0
12,0								1,0	12,0
13,0								0,8	13,0
14,0								0,6	14,0

DIAGRAMA DE LUCRU- WORKING DIAGRAM



NOTE LA CAPACITATELE DE RIDICARE

- Capacitatile de ridicare tabulate sunt conforme cu standardele CE.
- Capacitatile de ridicare sunt prezentate in tone metrice.
- Ponderele carligului, extensiilor, troliu si toate dispozitivele auxiliare de ridicare trebuie sa fie deduse din capacitatile de ridicare pentru a obtine sarcina neta care poate fi ridicata.
- Razele de lucru se masoara de la axa de rotire.
- Pentru lungimi de brat si/sau raze care nu sunt enumerate utilizati cea mai mica sarcina data pentru urmatoarea lungime de brat mai mare si/sau raza.
- Capacitatile pe stabilizatori sunt valabile numai in cazul in care toate grinzile de stabilizatori sunt complet extinse si macaraua nivelata cu precizie pe o suprafata de sprijin ferma.
- Capacitatile de pe anvelope sunt valabile numai in cazul in care pneurile sunt umflate la presiunea recomandata si macaraua functioneaza pe o suprafata plana, solida si orizontala:
 - pentru capacitatile de 360° statice, oscilatiile axului spate trebuie sa fie blocate.
 - pentru sarcinile frontale trebuie sa fie adaugata blocarea rotatiei si mersul cu incarcatura suspendata trebuie sa se faca cu incarcatura usor ridicata de la pamant, evitand oscilatiile incarcaturii

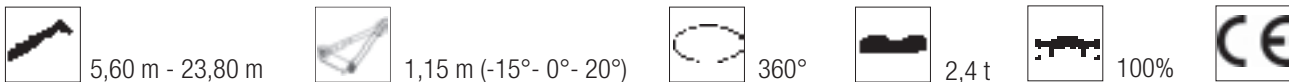
NOTES TO LOAD CHARTS

- The tabulated lifting capacities comply with the CE standards.
- Lifting capacities are given in metric tons.
- The weight of the hookblocks, boom extensions, sling and all auxiliary lifting devices must be deducted from the lifting capacities to obtain the net load to be lifted.
- Working radii are measured from the slewing centreline.
- For boom lengths and/or radii not listed use the smallest load given for the next longer boom length and/or radius.
- The capacities on outriggers are valid only if all outrigger beams are fully extended and the crane accurately levelled on a firm supporting surface.
- The capacities on tyres are valid only if the tyres are inflated to the recommended pressure and the crane works on a flat, solid and horizontal surface:
 - for 360° static capacities the rear axle oscillation must be locked.
 - for over front travelling capacities the swing lock pin must be fully engaged and the travel with suspended load should be carried out with the load little raised from the ground, close to the crane and avoiding load oscillations.

CAPACITATE RIDICARE EXTENSIE BRAT- LIFTING CAPACITIES BOOM EXTENSION



m	5,60 m		9,24 m		12,88 m		16,52 m		20,16 m		23,80 m		m
	8 m		8 m		8 m		8 m		8 m		8 m		
	0-0-0-0-0		1-0-0-0-0		1-1-0-0-0		1-1-1-0-0		1-1-1-0.5-0.5		1-1-1-1-1		
	0°	40°	0°	40°	0°	40°	0°	40°	0°	40°	0°	40°	
2,0	2,8		3,0										2,0
2,5	2,5		3,0		3,0								2,5
3,0	2,4		2,8		3,0		3,0						3,0
3,5	2,2		2,6		3,0		3,0		3,0				3,5
4,0	2,1		2,5		2,8		3,0		3,0		2,3		4,0
4,5	1,9		2,4		2,6		2,8		2,8		2,2		4,5
5,0	1,8		2,2		2,4		2,6		2,7		2,1		5,0
6,0	1,5	1,0	2,0	1,1	2,3		2,4		2,5		2,0		6,0
7,0	1,3	1,0	1,8	1,0	2,1	1,1	2,3		2,3		1,9		7,0
8,0	1,2	0,9	1,6	1,0	1,9	1,0	2,1	1,0	2,2	1,0	1,8		8,0
9,0	1,0	0,8	1,4	0,9	1,6	1,0	1,9	1,0	2,0	1,0	1,7	1,0	9,0
10,0	0,9	0,8	1,3	0,9	1,5	0,9	1,7	1,0	1,8	1,0	1,6	1,0	10,0
11,0			1,1	0,8	1,4	0,9	1,6	0,9	1,7	0,9	1,5	1,0	11,0
12,0			1,0	0,8	1,3	0,8	1,5	0,9	1,6	0,9	1,4	0,9	12,0
13,0			0,9	0,8	1,2	0,8	1,4	0,9	1,5	0,9	1,3	0,9	13,0
14,0					1,1	0,8	1,3	0,8	1,4	0,9	1,2	0,9	14,0
16,0					1,0	0,8	1,1	0,8	1,3	0,8	1,1	0,9	16,0
18,0							1,0	0,8	1,1	0,8	0,9	0,8	18,0
20,0							0,9	0,8	1,0	0,8	0,7	0,8	20,0
22,0									0,8	0,8	0,6	0,8	22,0
24,0									0,6	0,6	0,5	0,7	24,0
26,0											0,4	0,5	26,0
27,0											0,4	0,4	27,0






m	5,60 m			9,24 m			12,88 m			16,52 m			20,16 m			23,80 m			m
	1,15 m			1,15 m			1,15 m			1,15 m			1,15 m			1,15 m			
	0-0-0-0-0			1-0-0-0-0			1-1-0-0-0			1-1-1-0-0			1-1-1-0.5-0.5			1-1-1-1-1			
	-15°	0°	20°	-15°	0°	20°	-15°	0°	20°	-15°	0°	20°	-15°	0°	20°	-15°	0°	20°	
2,0	7,4	8,7	11,6	8,9	11,0		9,5	12,0		9,4	10,5		8,8			6,0			2,0
2,5	7,2	8,1	10,3	8,4	10,3		9,3	11,6		9,2	10,5		8,7	9,0		5,7			2,5
3,0	6,8	7,5	9,3	8,1	9,7	14,0	9,0	11,0		9,1	10,5		8,6	9,0		5,4	6,0		3,0
3,5	6,5	7,1	8,4	7,7	9,3	12,8	8,7	10,5		9,0	10,5		8,4	8,5		5,2	5,7		3,5
4,0				7,4	8,8	12,0	8,4	10,0		8,9	9,8		8,0	8,1		5,0	5,5		4,0
4,5				7,2	8,2	11,0	8,1	9,6		8,8	9,2		7,6	7,7		4,7	5,3		4,5
5,0				7,1	7,7	10,3	7,9	9,4	10,2	8,6	8,7		7,3	7,3		4,6	5,2		5,0
6,0				6,7	7,2	8,3	7,4	8,2	8,1	7,8	7,7		6,6	6,6		4,3	4,7		6,0
7,0				6,4	6,8	6,7	6,7	6,6	6,5	6,7	6,7	6,6	6,0	6,0		4,1	4,4		7,0
8,0							5,6	5,5	5,4	5,6	5,6	5,5	5,5	5,5		3,9	4,1		8,0
9,0							4,6	4,5	4,4	4,7	4,5	4,5	4,9	4,9	4,7	3,7	3,8		9,0
10,0							3,7	3,6	3,6	3,9	3,9	3,8	4,2	4,1	4,1	3,5	3,6		10,0
11,0										3,2	3,2	3,1	3,5	3,5	3,4	3,3	3,4	3,6	11,0
12,0										2,6	2,6	2,6	2,9	2,9	2,8	3,1	3,1	3,0	12,0
13,0										2,2	2,2	2,2	2,5	2,5	2,4	2,7	2,6	2,6	13,0
14,0										1,8	1,8	1,8	2,1	2,1	2,0	2,3	2,3	2,2	14,0
16,0													1,5	1,5	1,5	1,7	1,7	1,6	16,0
18,0																1,3	1,3	1,2	18,0
20,0																0,9	0,9	0,9	20,0
21,0																0,8	0,8	0,8	21,0

DATE TEHNICE - SPECIFICATIONS

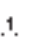





Incarcatura pe axe Axle loads	1	2	Greutate totala Total weight
t	8	10	18



Speeds		on road (forward and reverse)	off road (forward and reverse)
Km/h	 4x4	24	18
Km/h	 4x2	73	/
		20%	50%



Mecanisme Mechanisms	Progresiv variabil Infinitely variable	Diametru/Lungime franghie Rope diameter / Rope length	Putere maxima Max. permissible line pull
	0 - 87,3 m/min	12 mm x 117 m	24 kN
	0 - 2,8 min ⁻¹		
	-9,5° - +80°	↑ circa 42 s - approx 42 s ↓ circa 75 s - approx 75 s	
	5,6 m - 23,8 m	circa 85 s - approx 85 s	



Portata Lifting capacity	N° di carrucole No of sheaves	N° di taglie No of lines	Peso Weight
20 t	5	10	220 kg
12,5 t	3	7	160 kg
3 t	-	1	170 kg

Sub rezerva modificarilor fara preaviz / Subject to modification without notice

Simboluri - Symbols



Brat telescopic
Telescopic boom



Extensie brat
Boom extension



Stabilizatori
Outriggers



Cauciucuri
Tyres



Rotatie
Slewing



Contragreutate
Counterweight



Raza
Radius



Angrenaj
Gear



Gama lenta
Low range



Gama rapida
High range



Trolu principal
Main hoist



Trolu secundar
Auxiliary hoist



Extindere brat
Boom telescoping



Altitudine brat
Boom elevation



Carlig
Hook block

LOCATELLI

CRANE

