

LOCATELLI
CRANE



GRIL 8125 >>>

CAMION

SASIU

Cadru sudat, construit din materiale cu rezistenta superioara.

STABILIZATORI HIDRAULICI

4 stabilizatori hidraulici independent de cabina
4 cilindri verticali cu supape de etansare blocheaza in pozitie
4 trasee telescopice inclinabile complet la picioarele de sprijin

MOTOR

Caterpillar C 4.4, patru cilindri diesel turbo supraalimentat, racit cu apa .
Putere max 83 Kw (111HP) a 2.200 rot /min. Cuplu max 418 Nm la 1.400 rot/min.
Filtru aer uscat pe traseul admisie a aerului cu cartus de siguranta si indicator de colmatare. Capacitate rezervor carburant 90 l.

TRANSMISIE

Transmisie hidrostatica cu circuit inchis cu reglare continua a vitezei.
Pompa cu pistoane cu sarcina variabila, motor cu pistoane cu cilindru variabil montat pe schimbator-repartitor cu 2 viteze AV si RM.
Control electronic system pompa-motor hidraulic.

POMPE HIDRAULICE

La pinion – una dubla in tandem cu pompa cu pistoane si una singura, actionata de PTO pe motor. Sarcina totala 212 l/min la capacitate maxima. Capacitate rezervor ulei 290 l.

AX

Anterior: conducator/ax directie cu blocaj diferential, reductii planetare si schimbator-repartitor, montat rigid pe sasiu. Posterior: conducator/ax directie cu diferential si reductii planetare, oscilante pentru utilizare off-road. Blocare automata a oscilatiei pentru activitatea pe pneuri.

DIRECTIE

Hidrostatica, tip "load sensing", actionand pe cele 4 roti.
Trei posibilitati de directie: numai roti anterioare; coordonata; cu crab.

FRANE

De serviciu/urgenta: cu disc multiplu in baie de ulei, cu autoinregistrare, cu circuit dublu independent. Comanda cu pedale care actioneaza pe toate rotile.
De stationare : cu disc montat pe axa posterioara.

PNEURI

365/80 R20 actionate individual.

INSTALATIE ELECTRICA

De pornire si iluminare la 24 Volti conform cu normativa CE.

TURELA MACARA

STRUCTURA TURELA

Construita cu placi si profile din otel cu rezistenta superioara.

BRAT TELESCOPIC

Cu 3 sectiuni. Brat cu extindere integral hidraulica si sincronizat de la 4.85 m la 12.65 m. Inaltime maxima cap brat 15 m.
Optional: brat cu 4 sectiuni cu extindere hidraulica si sincronizata de la 5.85 m la 20 m. Inaltime max cap brat 22.10 m.

RIDICARE BRAT

Cilindru hidraulic cu efect dublu. Ridicare de la -9° la 78°.

ROTATIE TURELA

Rotatie continua la 360°. Motor oleodinamic cu reductor cu reductie dubla epicycloidală.
Frana de rotatie automata cu discuri multiple. Roata zimtata /pinion extern.
Blocare manuala rotatie cu comanda din cabina de pilotaj.

TROLIU

Hidraulic, actionat de motor cu pistoane axiale cuplate cu reductor cu reductie dubla epicycloidală. Tambur canelat.
Frana automata cu discuri multiple si valve de contrabalansare.

CABINA

Construita din otel si suspendata elastic pe partea stanga a turelei.
Vizibilitate panoramic completata de ferestre mari de siguranta.
Scaun operator culisant si reglabil in sus si jos.

COMENZI MACARA

Senzori de comanda montati pe bratele scaunului operator prin comanda independenta sau simultana cu miscarea macaralei. Butoane electrice pentru comanda stabilizatori,

DISTRIBUTORI

Distributorii hidraulici individuali garanteaza combinarea simultana a miscarilor macaralei. Sistem centralizat pentru control presiune hidraulica.

COMENZI MISCARI MACARA

Volan inclinabil pentru comanda directie roti anterioare.
Buton electric pentru directie independenta a rotilor posterioare.
Selector schimb de viteze , schimbare directive si frana de parcare.
Buton electric pentru comanda mers incet si rapid cu activare automata 2/4 roti conducatoare. Instrumente diagnoz motor.

DISPOZITIVE DE SIGURANTA

Limita urcare si coborare carlig. Valve de blocare pe toti cilindrii hidraulici.
Valve de presiune maxima pe toate circuitele hidraulice.

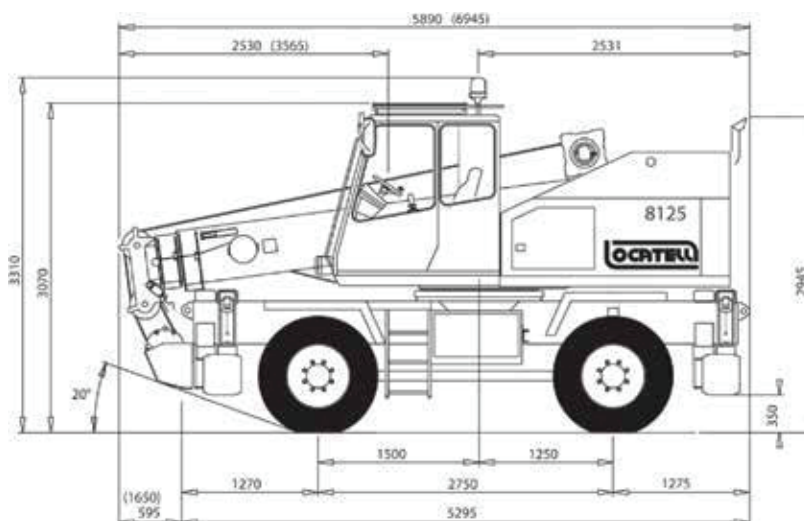
CONFIGURARE STABILIZATORI

ACCESORII LA CERERE

- Extensie inclinabila de 4.15 m
- Carlig cu bila 3.000 kg
- Far de lucru (cabina si sectiunea baza a bratului)
- Indicator electronic de sarcina *
- Dispozitiv reducere miscari *

- Incalzire independenta cabina *
- Aer conditionat
- Roata de rezerva 365/80 R20
- Radiocomanda
- *Aparatura standard cf normelor CE

∅ Dimensiuni GRIL 8125.4
∅ Dimensions for GRIL 8125.4



Dimensiuni (mm)

CHASSIS

CHASSIS

Heavy duty, all welded box type section frame.

OUTRIGGERS

4 hydraulically operated outrigger controlled from the cab. Four hydraulic cylinders with holding valves lock in position four telescopic inclinable beams with self-adjusting floats.

ENGINE

CATERPILLAR C4.4, four cylinders turbocharged intercooler diesel engine, water cooled. Max power 83 kW (111HP) at 2.200 rpm. Max torque 418 Nm at 1.400 rpm. Dry type air cleaner with service indicator. Fuel tank capacity 90 l.

TRANSMISSION

Hydrostatic, closed circuit with continuous speed regulation. Axial piston variable displacement pump and variable displacement motor mounted on 2 forward and 2 reverse speeds mechanical gearbox.

Fully electronic drive control.

HYDRAULIC PUMPS

Three gear type hydraulic pump system: one double, tandem mounted with transmission piston pump and one single, driven from power-take-off on the engine. Total pumps capacity 212 l/min. Oil tank capacity 290 l.

AXLES

Front: driving/steering axle with differential lockout, planetary reduction and gearbox, solidly mounted to frame.

Rear: driving/steering axle with differential and planetary reduction, pivot mounted to allow axle oscillation for rough terrain travel. Automatic oscillation lockout.

STEERING

Power assisted steering, load sensing type on four wheels. Three steering modes are available: only front wheels; 4-wheels coordinated; 4 wheels crab steering.

BRAKES

Service and emergency: multidisc-type, oil immersed, self-adjusting, hydraulically controlled dual independent braking system. Foot operated on all wheels. Parking: rear axle mounted, spring set, hydraulically released.

TYRES

365/80 R20 tubeless type, single mounted front and rear.

ELECTRICAL EQUIPEMENT

24 V equipement including light package according to EC traffic regulations.

OPTIONAL EQUIPEMENT

- 4.15 m offsetable extension
- Single hook 3.000 kg capacity
- Work lights (on cab and base boom)
- Motion cut equipment*
- Electronic safe load indicator*

SUPERSTRUCTURE

SUPERSTRUCTURE FRAME

Fabricated from high tensile steel plate.

BOOM

3 sections 4.85 to 12.65 m automatically synchronized fully powered telescopic boom. Max. boom head height 15 m.

Optional: 4 sections 5.85 to 20.00 m automatically synchronized fully powered telescopic boom. Max. boom head height 22.10 m.

BOOM ELEVATION

Single double-acting cylinder. Elevation from -9° a $+78^{\circ}$.

SLEW

360° continuous rotation. Orbit type hydraulic motor driving slewing pinion through planetary double reduction unit. Spring applied, hydraulically released multidisc type slew brake. External gear teeth slew ring. Hand operated slewing lock, controlled from the operator's cab.

MAIN HOIST

Hydraulic. Axial piston type hydraulic motor driving hoist drum through double reduction gear unit. Spring applied, hydraulically released fail-safe hoist brake and counterbalance valve. Hoist drum cable follower.

OPERATOR'S CAB

Turntable mounted on rubber grommets, left hand drive, fully enclosed, all steel construction with safety glass and operator's seat on slides with height and rake adjustment.

CRANE CONTROLS

Armrest mounted joysticks for independent or simultaneous operation of crane motions. Electric switches for outriggers control.

CONTROL VALVES

Individual valve banks permitting simultaneous independent control of multiple crane functions. Centralized system for hydraulic pressure control.

TRAVEL CONTROLS

Adjustable steering wheel. Steering modes selector switch. Forward and reverse speed shift lever. Electric switches for transmission gear selection, front differential lockout and parking brake control.

SAFETY DEVICES

Overhoist and overlower limit switches; lock valves on all cylinders; hydraulic overload valves on all systems.

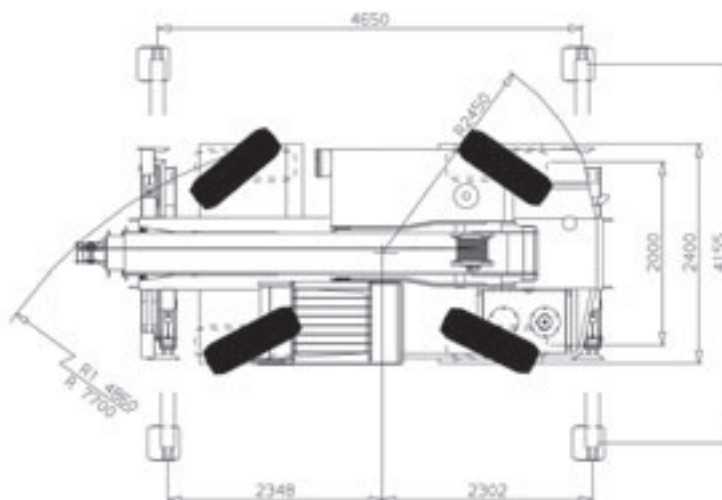
- Hot water cab heater/defroster*

- Air conditioned

- Spare tyre 365/80 R20

- Remote control

*Standard equipment for CE machine



R1:
4 roti directoare
4 wheels steered

Dimensiuni (mm)

CAPACITATI RIDICARE BRAT PRINCIPAL - LIFTING CAPACITIES TELESCOPIC BOOM



m	5,9 m				10,6 m		15,3 m		20 m		m
2,0	12,5										2,0
2,5	10,1										2,5
3,0	8,9										3,0
3,5	8,0										3,5
4,0	7,1										4,0
4,5											4,5
5,0											5,0
6,0											6,0
8,0											8,0
10,0											10,0
12,0											12,0
14,0											14,0
16,0											16,0



m	0 km/h						m
	360°			0°			
	5,9 m	10,6 m	15,3 m	5,9 m	10,6 m	15,3 m	
2,5	4,6	4,6	3,0	7,4	6,0	4,5	2,5
3,0	3,9	3,9	3,0	5,8	5,8	4,5	3,0
3,5		3,0	3,0		5,0	4,5	3,5
4,0		2,4	2,4		4,5	4,5	4,0
4,5		1,9	1,9		3,6	3,6	4,5
5,0		1,5	1,5		2,9	2,9	5,0
6,0		1,1	1,1		2,0	2,0	6,0
8,0						0,9	8,0

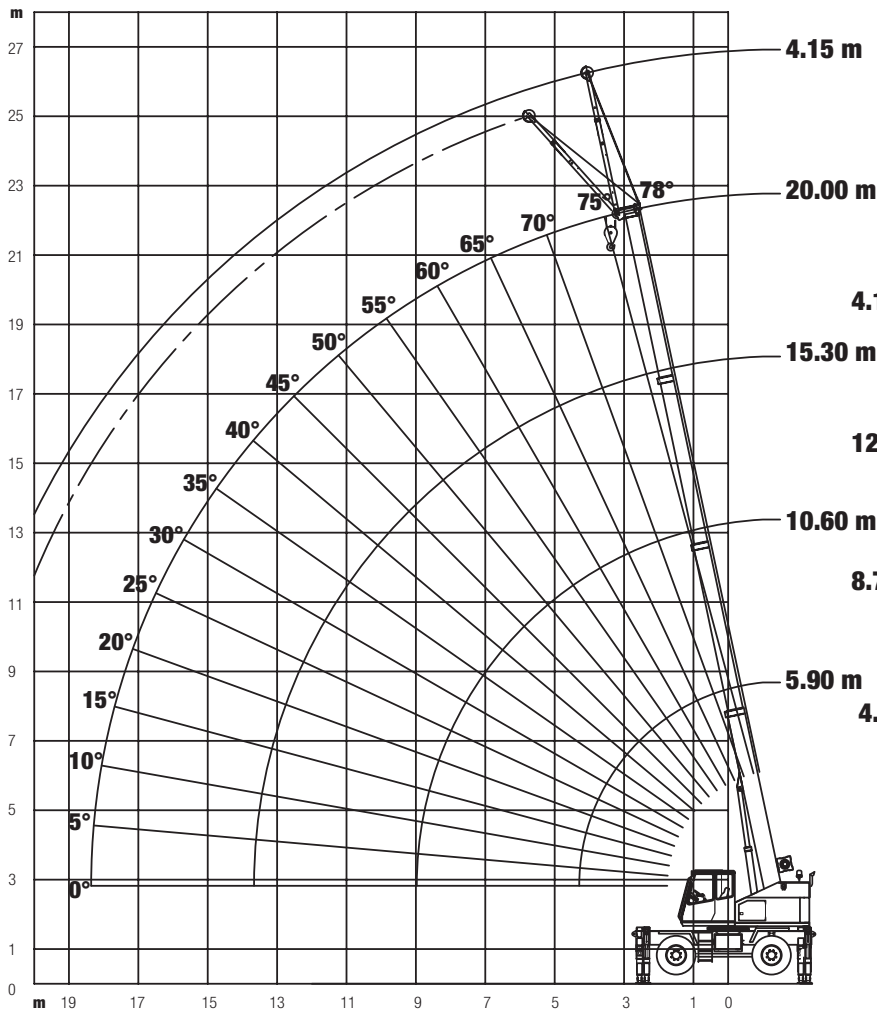
CAPACITATI RIDICARE EXTENSIE BRAT - LIFTING CAPACITIES BOOM EXTENSION



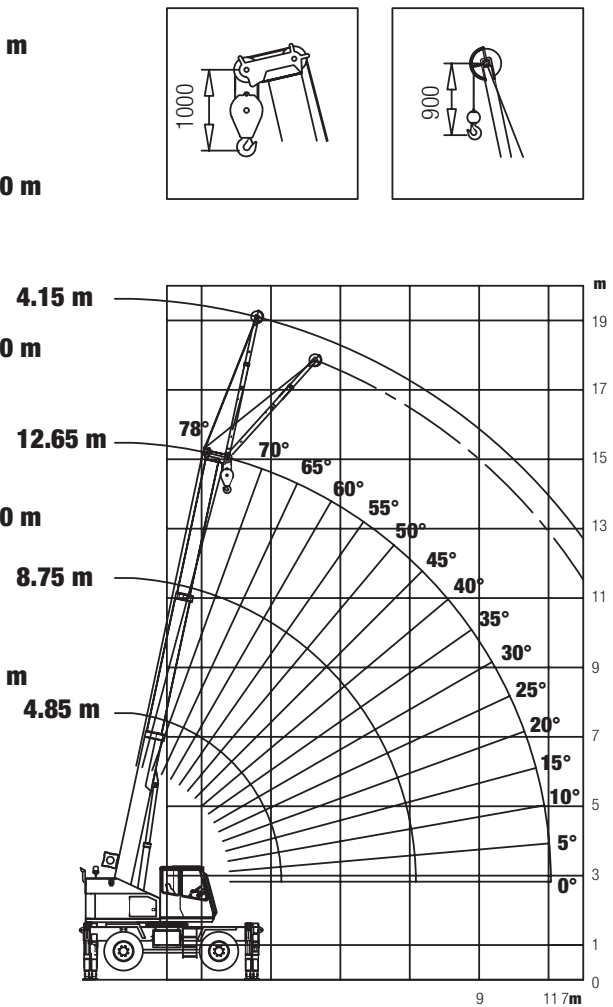
m	5,9 m		10,6 m		15,3 m		20,0 m		m
	4,15 m		4,15 m		4,15 m		4,15 m		
	0°	30°	0°	30°	0°	30°	0°	30°	
2,5	1,6		1,9						2,5
3,0	1,4	1,0	1,9		2,0				3,0
3,5	1,2	0,9	1,8		1,9				3,5
4,0	0,9	0,8	1,7	1,0	1,9				4,0
4,5	0,7	0,7	1,6	0,9	1,8		2,0		4,5
5,0		0,6	1,4	0,9	1,8	1,0	1,9		5,0
6,0		0,4	1,1	0,8	1,6	0,9	1,8	1,0	6,0
8,0				0,6	1,2	0,8	1,6	0,9	8,0
10,0					0,7	0,6	1,2	0,7	10,0
12,0							0,8	0,6	12,0
14,0								0,4	14,0

DIAGRAMA DE LUCRU- WORKING DIAGRAM

GRIL 8125.4



GRIL 8125.3



NOTE LA CAPACITATILE DE RIDICARE

- Capacitatile de ridicare tabulate sunt conforme cu standardele CE.
- Capacitatile de ridicare sunt prezentate in tone metrice.
- Ponderea carligului, extensiilor, trolu si toate dispozitivele auxiliare de ridicare trebuie sa fie deduse din capacitatile de ridicare pentru a obtine sarcina neta care poate fi ridicata.
- Razele de lucru se masoara de la axa de rotire.
- Pentru lungimi de brat si/sau raze care nu sunt enumerate utilizati cea mai mica sarcina data pentru urmatoarea lungime de brat mai mare si/sau raza.
- Capacitatile pe stabilizatori sunt valabile numai in cazul in care toate grinzile de stabilizatori sunt complet extinse si macaraua nivelata cu precizie pe o suprafata de sprijin ferma.
- Capacitatile de pe anvelope sunt valabile numai in cazul in care pneurile sunt umflate la presiunea recomandata si macaraua functioneaza pe o suprafata plana, solida si orizontala:
 - pentru capacitatile de 360° statice, oscilatiile axului spate trebuie sa fie blocate.
 - pentru sarcinile frontale trebuie sa fie adaugata blocarea rotatiei si mersul cu incarcatura suspendata trebuie sa se faca cu incarcatura usor ridicata de la pamant, evitand oscilatiile incarcaturii

NOTES TO LOAD CHARTS

- The tabulated lifting capacities comply with the CE standards.
- Lifting capacities are given in metric tons.
- The weight of the hookblocks, boom extensions, sling and all auxiliary lifting devices must be deducted from the lifting capacities to obtain the net load to be lifted.
- Working radii are measured from the slewing centreline.
- For boom lengths and/or radii not listed use the smallest load given for the next longer boom length and/or radius.
- The capacities on outriggers are valid only if all outrigger beams are fully extended and the crane accurately levelled on a firm supporting surface.
- The capacities on tyres are valid only if the tyres are inflated to the recommended pressure and the crane works on a flat, solid and horizontal surface:
 - for 360° static capacities the rear axle oscillation must be locked.
 - for over front travelling capacities the swing lock pin must be fully engaged and the travel with suspended load should be carried out with the load little raised from the ground, close to the crane and avoiding load oscillations.

CAPACITATE DE RIDICARE EXTENSIE BRAT - LIFTING CAPACITIES BOOM EXTENSION



m	4,85 m			8,75 m			12,65 m			m						
	2,0	2,5	3,0	3,5	4,0	4,5	5,0	6,0	7,0		8,0	9,0	10,0	11,0		
2,0	12,5	11,3	9,4	10,0	8,9	7,8	7,2	6,3	5,7	5,1	4,6	4,1	3,5	3,0	2,5	2,0
2,5	11,3	9,4		8,9	7,8	7,0	6,3	5,7	5,1	4,6	4,1	3,5	3,0	2,5	2,0	1,6
3,0	9,4			7,8	7,0	6,3	5,7	5,1	4,6	4,1	3,5	3,0	2,5	2,0	1,6	1,0
3,5				7,0	6,3	5,7	5,1	4,6	4,1	3,5	3,0	2,5	2,0	1,6	1,0	
4,0				6,3	5,7	5,1	4,6	4,1	3,5	3,0	2,5	2,0	1,6	1,0		
4,5				5,7	5,1	4,6	4,1	3,5	3,0	2,5	2,0	1,6	1,0			
5,0				5,1	4,6	4,1	3,5	3,0	2,5	2,0	1,6	1,0				
6,0				4,6	4,1	3,5	3,0	2,5	2,0	1,6	1,0					
7,0				4,1	3,5	3,0	2,5	2,0	1,6	1,0						
8,0				3,5	3,0	2,5	2,0	1,6	1,0							
9,0				3,0	2,5	2,0	1,6	1,0								
10,0				2,5	2,0	1,6	1,0									
11,0				2,0	1,6	1,0										



m	0 km/h						m
	360°			0°			
	4,85 m	8,75 m	12,65 m	4,85 m	8,75 m	12,65 m	
2,5	4,6	4,6	3,0	7,4	6,0	4,5	2,5
3,0	3,9	3,9	3,0	5,8	5,8	4,5	3,0
3,5		3,0	3,0		5,0	4,5	3,5
4,0		2,4	2,4		4,5	4,5	4,0
4,5		1,9	1,9		3,6	3,6	4,5
5,0		1,5	1,5		2,9	2,9	5,0
6,0		1,1	1,1		2,0	2,0	6,0
7,0		0,7	0,7		1,4	1,4	7,0
8,0						0,9	8,0

CAPACITATE DE RIDICARE EXTENSIE BRAT - LIFTING CAPACITIES BOOM EXTENSION



m	4,85 m		8,75 m		12,65 m		m
	4,15 m		4,15 m		4,15 m		
	0°	30°	0°	30°	0°	30°	
2,5	1,4		1,7		2,0		2,5
3,0	1,1	1,0	1,7		1,9		3,0
3,5	0,8	0,8	1,5		1,8		3,5
4,0		0,7	1,4	0,9	1,7		4,0
4,5		0,6	1,2	0,8	1,6	1,0	4,5
5,0		0,5	1,0	0,7	1,5	0,9	5,0
6,0				0,6	1,2	0,8	6,0
7,0				0,5	0,9	0,7	7,0
8,0					0,7	0,6	8,0
9,0						0,5	9,0

DATE TEHNICE - SPECIFICATIONS

	Incarcatura pe axe Axle loads	1	2	Greutate totala Total weight
	8125.3	t	4,9	6,7
8125.4	t	5,2	6,9	12,3

		1	2	R1	R2	
		Km/h	4x4	14	38	
		365/80 R20				

	Mecanism Mechanisms	Progresiv variabil Infinitely variable	Diametru/Lungime franghie Rope diameter / Rope length	Putere maxima Max.permissible line pull
			38 m/min	12 mm x 80 m
		0 - 2,6 min ⁻¹		
		-9° - +78°	circa 15 s - approx 15 s-env.	
8125.3		4,85 m - 12,65 m	circa 27 s - approx 27 s-env.	
8125.4		5,90 m - 20,00 m	circa 38 s - approx 38 s-env.	

	Capacitate ridicare Lifting capacity	Nr de scripeti No of sheaves	Numar franghii No of lines	Greutate Weight
	12,5 t	3	6	150 kg
3 t	-	1	70 kg	

Sub rezerva modificarilor fara preaviz / Subject to modification without notice

Simboluri - Symbols

	Brat telescopic Telescopic boom		Extensie brat Boom extension		Stabilizatori Outriggers		Cauciucuri Tyres		Rotatie Slewing
	Contragreutate Counterweight		Raza Radius		Angrenaj Gear		Gama lenta Low range		Gama rapida High range
	Troliu principal Main hoist		Troliu secundar Auxiliary hoist		Extindere brat Boom telescoping		Alitudine brat Boom elevation		Carlig Hook block

LOCATELLI

CRANE

