

LOCATELLI
CRANE



GRIL 8400T >>

CAMION

SASIU

Cadru sudat, construit din materiale cu rezistenta superioara.

STABILIZATORI HIDRAULICI

Hidraulici independenti cu 4 trasee si iesire orizontala si 4 cilindri verticali cu valve de blocare. Picioare de sprijin demontabile.

Comenzi hidraulice cu posibilitate de iesire partial actionate de cabina de pilotaj.

MOTOR

CATERPILLAR ACERT C6.6, 6 cilindri diesel turbo intercooler cu control electronic si racire cu apa. Putere max 116.5 Kw cu 2.200 rotatii /min. Cuplu max 683 Nm la 1.400 rotatii/min. Filtru uscat de admisie a aerului cu cartus de siguranta si indicator de colmatare. Capacitate rezervor carburant 240 l.

TRASMISIE

Convertor de cuplu si schimbator "power shift" cu 6 trepte inainte si 6 trepte marsalier

POMPE HIDRAULICE

La pinion – una tripla si una dubla, actionate de PTO pe convertor si pe motor. Sarcina totala 380 l/min la capacitate maxima.. Capacitate rezervor 420 l.

AX

Anterior: conducere/ ax directe cu diferential si reductii planetare montate rigid pe sasiu. Posterior:conducere/ax directive si reductii planetare, oscilante pentru utilizare off-road. Blocare automata a oscilatiei pentru activitatea pe pneuri.

DIRECTIE

Anterioara: actionata hydraulic cu comanda volan.

Posterioara: independenta, hidraulica, cu indicator de aliniere a rotilor posteroare.

Patru posibilitati de directie: numai roti anterioare; roti posteroare; coordonata; cu crab. Blocaj mecanic al directiei posteroare pentru mersul pe strada.

FRANE

De serviciu/urgenta: cu disc cu actionare hidropneumatica cu circuit dublu independent.

Comanda cu pedale care actioneaza pe toate rotile.

De stationare : cu disc montat pe axa anterioara si comandat de cilindru cu arc.

PNEURI

16.00 x 25 – tip "off-road", actionat individual

INSTALATIE ELECTRICA

De pomire si iluminare la 24 Volti conform cu normativa CE.

ACCESORII LA CERERE

- Extensie cu traseu electric inclinabila de la 8 m
- Extensie telescopic inclinabila de la 9.0 la 16.1m
- Carlig cu bila 5.000 kg
- Bloc cu 1 scripete de 15.000 kg
- Troliu auxiliar tiraj 4.000 kg
- Far de lucru (cabina si sectiunea baza a bratului)

TURELA MACARA

STRUCTURA TURELA

Construita cu placi si profile din otel cu rezistenta superioara

BRAT TELESCOPIC

Cu 4 sectiuni. Brat cu extindere integral hidraulica si sincronizat de la 10.1 m la 32 m. Inaltime maxima cap brat 34.5 m.

RIDICARE BRAT

Cilindru hidraulic cu efect dublu. Ridicare de la -3° la 80°.

ROTATIE TURELA

Rotatie continua la 360°. Motor hidraulic cu reductor cu reductie dubla epicycloidal.

Frana de rotatie automata cu discuri multiple. Sistem de rotatie libera.

Roata zimtata /pimion intern. Blocare manuala rotatie cu comanda din cabina de pilotaj.

TROLIU

Hidraulic cu 2 viteze. Motor hidraulic cu 2 trepte de viteza cuplat la reductor cu 2 reductii epicycloidale. Tambur canelat.

Frana automata cu discuri multiple si valve de contrabalansare.

CABINA

Construita din otel si suspendata elastic pe partea stanga a turelei.

Vizibilitate panoramic completata de ferestre mari de siguranta.

Scaun operator culisant si reglabil in sus si jos.

COMENZI MACARA

Senzori de comanda montati pe bratele scaunului operator prin comanda independent sau simultana cu miscarea macaralei. Butoane electrice pentru comanda stabilizatori, pentru mers rapid troliu si rotatie libera.

DISTRIBUTORI

Distributoorii hidraulici individuali garanteaza combinarea simultana a miscarilor macaralei. Sistem centralizat pentru control presiune hidraulica.

COMENZI MISCARI MACARA

Volan inclinabil pentru comanda directie roti anterioare.

Buton electric pentru directie independenta a rotilor posteroare.

Selector schimb de viteze, schimbare directie si frana de parcare.

Buton electric pentru comanda mers incet si rapid cu activare automata 2/4 roti conducatoare. Instrumente diagnoz motor.

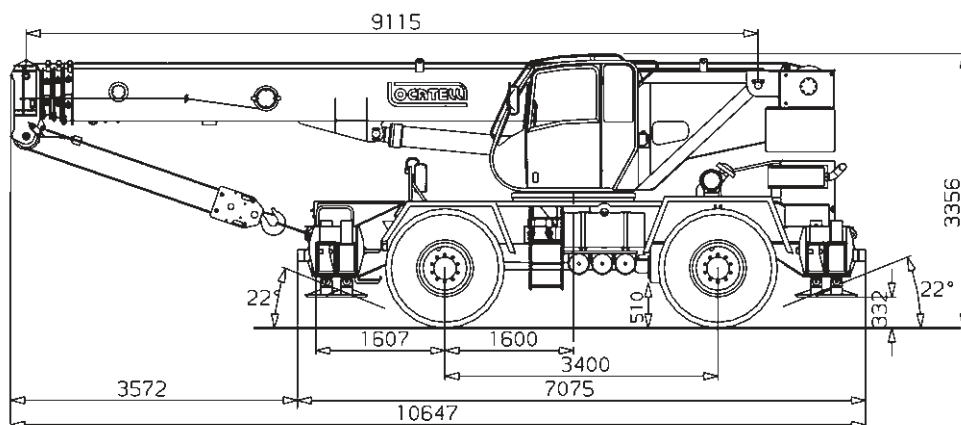
DISPOZITIVE DE SIGURANTA

Limita urcare si coborare carlig. Valve de blocare pe toti cilindrii hidraulici.

Valve de presiune maxima pe toate circuitele hidraulice.

CONFIGURARE STABILIZATORI

- Indicator electronic de sarcina *
- Dispozitiv reducere miscari *
- Incalzire independenta cabina *
- Aer conditionat
- Roata de rezerva 16.00x25
- Radiocomanda
- *Aparatura standard cf normelor CE



Dimensiuni (mm)

CHASSIS

CHASSIS

Heavy duty, all welded box type section frame.

OUTRIGGERS

4 independent hydraulically operated telescopic outrigger beams with vertical hydraulic jacks and lock valves. Removable floats. Electro-hydraulic controls with partial extension facility controlled from cab.

ENGINE

CATERPILLAR ACERT C6.6, six cylinders turbocharged intercooler diesel engine, electronically controlled and water cooled.
Max power 116.5kW at 2.200 rpm. Max torque 683 Nm at 1.400 rpm. Dry type air cleaner with safety cartridge and service indicator. Fuel tank capacity 240 l.

TRANSMISSION

Engine mounted torque converter driving an electro-hydraulically controlled power-shift transmission having 6 forward and 6 reverse speeds.

HYDRAULIC PUMPS

5 gear type hydraulic pump system, driven from power-take-offs mounted on torque converter and engine. Total pumps capacity 380 l/min. Oil tank capacity 420 l.

AXLES

Front: driving/steering axle with differential and planetary reduction solidly mounted to frame.

Rear: driving/steering axle with differential and planetary reduction, pivot mounted. Automatic rear axle oscillation lockout.

STEERING

Front: hydraulically powered steering controlled by steering wheel. Rear: independent hydraulically powered steering with rear wheel alignment indicator. Four steering modes: only front, only rear, coordinated and crab steering. Positive lock to hold in center line rear wheels for road travel.

BRAKES

Service and emergency: compressed air over hydraulic pressure dual independent braking system, foot operated on all wheels.

Parking: disk type, spring set, air released brake actuator acting on front axle.

TYRES

16.00 x 25 – earthmover type, single mounted front and rear.

ELECTRICAL EQUIPEMENT

24 V starting and lighting equipment according to EC traffic regulations.

SUPERSTRUCTURE

SUPERSTRUCTURE FRAME

Fabricated from high tensile steel plate.

BOOM

4 sections 9.1 to 29.5 m automatically synchronized fully powered telescopic boom. Max. boom head height 32.3 m.

BOOM ELEVATION

Single double-acting hydraulic cylinder. Elevation from -3° a $+82^{\circ}$.

SLEW

360° continuous rotation. Piston type hydraulic motor driving slewing pinion through planetary double reduction unit. Spring applied, hydraulically released multidisc type slew brake. Free swing device. Hand operated slewing lock, controlled from the operator's cab.

MAIN HOIST

Hydraulic, two speeds. Twin piston type hydraulic motor driving grooved hoist drum through double reduction gear unit. Spring applied, hydraulically released fail-safe hoist brake and counterbalance valve.

OPERATOR'S CAB

Turntable mounted on rubber grommets, left hand drive, fully enclosed, all steel construction with safety glass and operator's seat on slides with height and rake adjustment.

CRANE CONTROLS

Armrest mounted joysticks for independent or simultaneous operation of crane motions; electric switches for control of outriggers, fast hoist speed and free swing.

CONTROL VALVES

Individual valve banks permitting simultaneous independent control of multiple crane functions. Centralized system for hydraulic pressure control.

TRAVEL CONTROLS

Adjustable steering wheel for control of front steering axle. Electric switch for independent steering of rear axle. Transmission gear selection, forward-reverse shift and parking brake control. Control switch for high-low range speeds with automatic 2 or 4 wheel drive selection. Master gauge for engine diagnostic.

SAFETY DEVICES

Overhoist and overlower limit switches; lock valves on all cylinders; hydraulic overload valves on all systems.

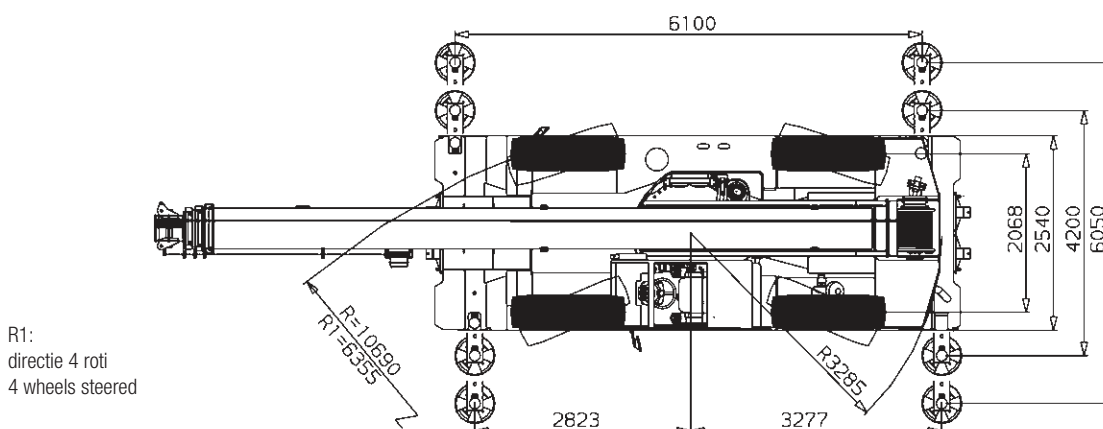
OUTRIGGER EXTENSION SENSING SYSTEM

OPTIONAL EQUIPEMENT

- 8.0 m offsetable lattice extension
- 9.0 - 16.1 telescopic offsetable extension
- Single hook 5.000 kg capacity
- Hookblock 12.000 kg
- Auxiliary hoist, max line pull 4.000 kg
- Work lights (on cab and base boom)

- Motion cut equipment*
- Electronic safe load indicator*
- Independent cab heater/defroster*
- Air conditioned
- Spare tyre 16.00 x 25
- Remote control

*Standard equipment for CE machine



Dimensiuni (mm)



CAPACITATI RIDICARE BRAT PRINCIPAL - LIFTING CAPACITIES TELESCOPIC BOOM



9,1 m - 29,5 m



100 %





360°



5 t



 m	9,1 m	14,2 m	19,3 m	24,4 m	28,5 m	29,5 m	m 
3,0	35,0	19,1	17,1				3,0
3,5	32,7	19,5	17,5				3,5
4,0	30,4	19,9	17,5	13,0			4,0
4,5	27,6	20,4	17,5	13,0	8,9		4,5
5,0	24,7	19,0	17,0	13,0	9,0	8,0	5,0
6,0	20,2	18,2	16,0	12,0	9,0	8,0	6,0
7,0		15,8	15,9	11,5	9,0	8,0	7,0
8,0		13,0	12,9	10,5	8,5	8,0	8,0
9,0		10,9	10,9	9,5	7,8	7,7	9,0
10,0		8,8	8,8	8,6	7,0	7,0	10,0
12,0		6,4	6,4	6,4	5,8	5,7	12,0
14,0			5,1	5,1	4,8	4,7	14,0
16,0			3,8	3,8	3,8	3,8	16,0
18,0				3,1	3,1	3,1	18,0
20,0				2,5	2,5	2,6	20,0
22,0				1,7	1,8	1,8	22,0
24,0					1,6	1,6	24,0
26,0					1,3	1,4	26,0
27,0						1,2	27,0



9,1 m - 19,3 m



16.00 R 25



360° / 0°



5 t





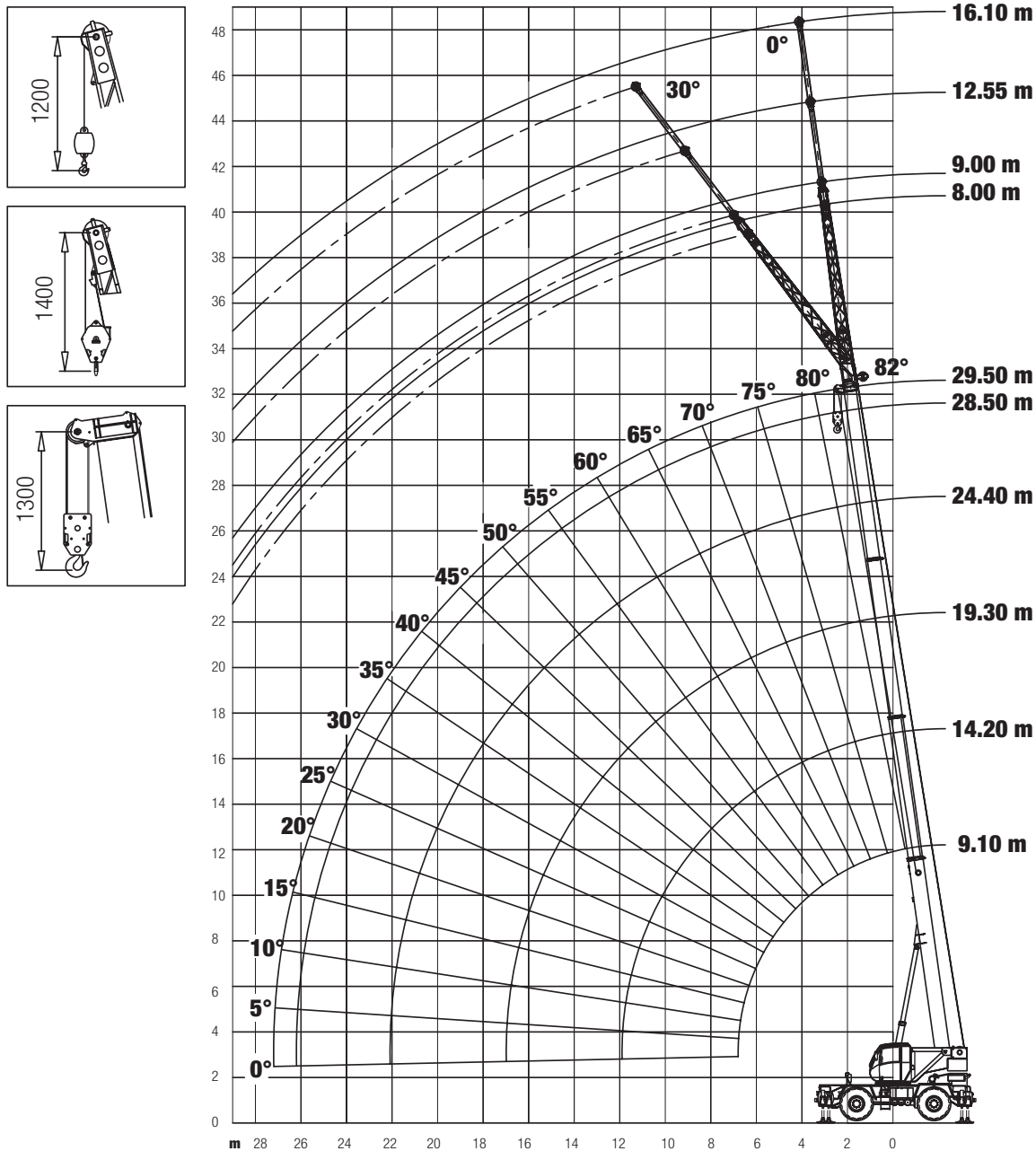
 m	0 km/h			3 km/h			m 
	360°			0°			
	9,1 m	14,2 m	19,3 m	9,1 m	14,2 m	19,3 m	
3,0	14,8	15,1	15,2	18,4	18,4	17,1	3,0
3,5	11,4	11,6	11,8	15,0	15,0	15,0	3,5
4,0	9,1	9,4	9,5	12,5	12,8	12,9	4,0
4,5	7,5	7,7	7,9	10,4	10,7	10,8	4,5
5,0	6,3	6,5	6,6	8,8	9,1	9,2	5,0
6,0		5,0	5,1	6,8	7,1	7,2	6,0
7,0		3,9	4,0		5,6	5,7	7,0
8,0		3,0	3,1		4,5	4,6	8,0
9,0		2,4	2,5		3,7	3,8	9,0
10,0		1,9	2,0		3,1	3,2	10,0
12,0			1,3			2,3	12,0
14,0						1,6	14,0
15,0						1,4	15,0

DIAGRAMA DE LUCRU-WORKING DIAGRAM



NOTE LA CAPACITATE DE RIDICARE



- Capacitățile de ridicare tabulate sunt conforme cu standardele CE.
 - Capacitățile de ridicare sunt prezentate în tone metrice.
 - Ponderele carligului, extensilor, trolui și toate dispozitivele auxiliare de ridicare trebuie să fie deduse din capacitățile de ridicare pentru a obține sarcina netă care poate fi ridicată.
 - Razele de lucru se măsoară de la axa de rotație.
 - Pentru lungimi de braț și/sau raze care nu sunt enumerate utilizați cea mai mică sarcină dată pentru următoarea lungime de braț mai mare și/sau rază.
 - Capacitățile pe stabilizatori sunt valabile numai în cazul în care toate grinzile de stabilizatori sunt complet extinse și macaraua nivelată cu precizie pe o suprafață de sprijin fermă.
 - Capacitățile de pe anvelope sunt valabile numai în cazul în care pneurile sunt umflate la presiunea recomandată și macaraua funcționează pe o suprafață plană, solidă și orizontală:
- pentru capacitățile de 360° statice, oscilațiile axului spate trebuie să fie blocate.
 - pentru sarcinile frontale trebuie să fie adăugată blocarea rotației și mersul cu încărcatura suspendată trebuie să se facă cu încărcatura ușor ridicată de la pamant, evitând oscilațiile încărcăturii

NOTES TO LOAD CHARTS



- The tabulated lifting capacities comply with the CE standards.
 - Lifting capacities are given in metric tons.
 - The weight of the hookblocks, boom extensions, sling and all auxiliary lifting devices must be deducted from the lifting capacities to obtain the net load to be lifted.
 - Working radii are measured from the slewing centreline.
 - For boom lengths and/or radii not listed use the smallest load given for the next longer boom length and/or radius.
 - The capacities on outriggers are valid only if all outrigger beams are fully extended and the crane accurately levelled on a firm supporting surface.
 - The capacities on tyres are valid only if the tyres are inflated to the recommended pressure and the crane works on a flat, solid and horizontal surface:
- for 360° static capacities the rear axle oscillation must be locked.
 - for over front travelling capacities the swing lock pin must be fully engaged and the travel with suspended load should be carried out with the load little raised from the ground, close to the crane and avoiding load oscillations.

CAPACITATE DE RIDICARE EXTENSIE BRAT - LIFTING CAPACITIES BOOM EXTENSION



 m	9,10 m		24,40 m		29,50 m		m 
	8 m		8 m		8 m		
	0°	30°	0°	30°	0°	30°	
3,0	3,1						3,0
3,5	3,0						3,5
4,0	3,0		3,4				4,0
4,5	2,7	1,2	3,3				4,5
5,0	2,4	1,2	3,2		3,5		5,0
6,0	2,3	1,0	3,2		3,4		6,0
7,0	2,0	1,0	3,1		3,3		7,0
8,0	1,6	1,0	3,0	1,2	3,2		8,0
9,0	1,3	0,9	3,0	1,1	3,1	1,2	9,0
10,0	1,2	0,9	2,8	1,1	3,0	1,2	10,0
12,0	0,9	0,8	2,5	1,0	2,8	1,1	12,0
14,0	0,7	0,7	2,3	1,0	2,6	1,0	14,0
16,0			1,9	0,9	2,4	1,0	16,0
18,0			1,5	0,9	2,1	0,9	18,0
20,0			1,2	0,8	1,7	0,9	20,0
22,0			1,0	0,8	1,4	0,8	22,0
24,0				0,7	1,2	0,8	24,0
26,0				0,6	0,9	0,7	26,0
28,0					0,7	0,6	28,0
29,0					0,6	0,5	29,0



 m	9,10 m						24,40 m						29,50 m						m 	
	9 m		12,55 m		16,10 m		9 m		12,55 m		16,10 m		9 m		12,55 m		16,10 m			
	0°	30°	0°	30°	0°	30°	0°	30°	0°	30°	0°	30°	0°	30°	0°	30°	0°	30°		
3,0	1,8		1,5		1,3					2,0										3,0
3,5	1,6		1,4		1,2					2,0					2,0					3,5
4,0	1,4		1,3		1,0		2,9		1,9		1,5				2,0					4,0
4,5	1,2		1,2	1,2	0,9		2,6		1,8		1,5				2,0					4,5
5,0	1,1	1,2	1,0	1,2	0,8		2,3		1,6		1,5		2,9		2,0		1,5			5,0
6,0	0,9	1,0	0,9	1,2	0,7		2,0		1,4		1,3		2,7		1,8		1,5			6,0
7,0	0,8	0,7	0,7	1,0	0,6	0,7	1,8		1,3		1,1		2,3		1,6		1,3			7,0
8,0	0,7	0,7	0,7	0,9	0,5	0,7	1,6	1,5	1,1	1,2	1,0		2,0		1,4		1,1			8,0
9,0	0,6	0,6	0,6	0,8	0,4	0,7	1,4	1,3	0,9	1,2	0,9	0,7	1,8	1,4	1,3	1,2	1,0			9,0
10,0	0,5	0,5	0,6	0,6	0,3	0,6	1,1	1,0	0,8	1,1	0,8	0,7	1,6	1,2	1,2	1,2	0,9			10,0
12,0	0,2	0,4	0,5	0,3	0,2	0,5	0,9	0,8	0,7	0,9	0,7	0,7	1,3	1,0	1,0	1,1	0,8	0,7		12,0
14,0	0,2	0,3	0,4	0,2	0,2	0,4	0,7	0,6	0,6	0,7	0,6	0,6	1,1	0,7	0,8	0,8	0,7	0,6		14,0
16,0	0,2	0,2	0,3	0,2		0,3	0,5	0,4	0,5	0,6	0,5	0,5	0,9	0,6	0,7	0,6	0,6	0,5		16,0
18,0	0,2		0,2			0,2			0,4	0,5		0,5	0,7	0,5	0,6	0,6	0,4	0,5		18,0
20,0			0,2							0,4		0,4	0,5		0,5	0,5		0,4		20,0
22,0													0,4		0,4	0,4		0,4		22,0
23,0																		0,4		23,0

DATE TEHNICE - SPECIFICATIONS

	Incarcatura pe axe Axle loads	1	2	Peso totale Total weight
	t	12	15,7	27,7

		1	2	3	R1	R2	R3	
	km/h 4x4	3	5,5	16	3	5,5	16	70%
	km/h 4x2	6	12	37	6	12	37	17%
	16.00 X 25							

	Mecanisme Mechanisms	Progresiv variabil Infinitely variable	Diametru/Lungime funie Rope diameter / Rope length		Putere maxima Max. permissible line pull	
	1.	0 - 129 m/min	15 mm x 155 m		39,2 kN	
	2.	0 - 62 m/min	15 mm x 120 m		39,2 kN	
		0 - 3,3 min ⁻¹				
		-3° - +82°		circa 40 s - approx 40 s-env.		
		9,10 m - 29,5 m		circa 70 s - approx 70 s-env.		

	Capacitate ridicare Lifting capacity	Nr scripeti No of sheaves	Nr frangii No of lines	Greutate Weight
	35 t	5	10	400 kg
	12 t	1	3	180 kg
	5 t	-	1	100 kg

Sub rezerva modificarilor fara preaviz / Subject to modification without notice

Simboluri - Symbols

	Brat telescopic Telescopic boom		Extensie brat Boom extension		Stabilizatori Outriggers		Cauciucuri Tyres		Rotatie Slewing
	Contragreutate Counterweight		Raza Radius		Angrenaj Gear		Gama lenta Low range		Gama rapida High range
	Troliu principal Main hoist		Troliu secundar Auxiliary hoist		Extindere brat Boom telescoping		Altitudine brat Boom elevation		Carlig Hook block

LOCATELLI

CRANE

